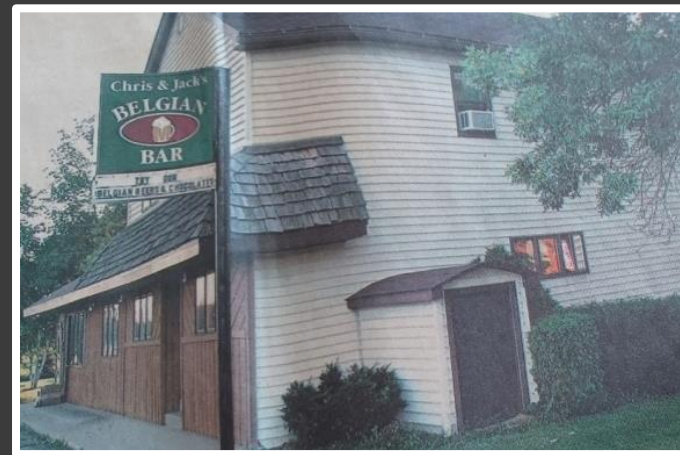
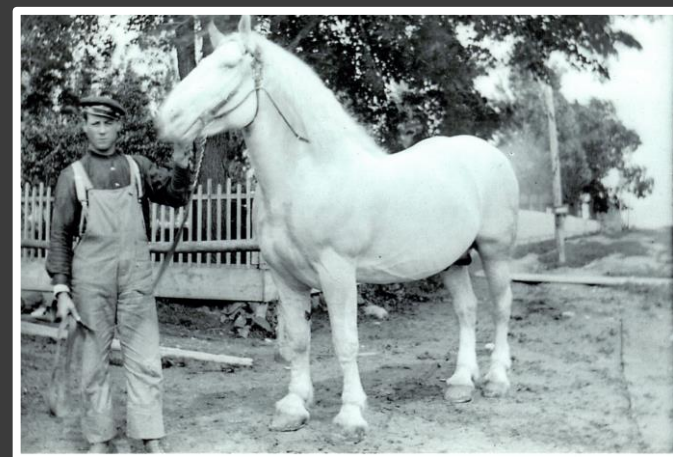




BELGIAN HERITAGE CENTER

Belgian Homesteads

September 2024

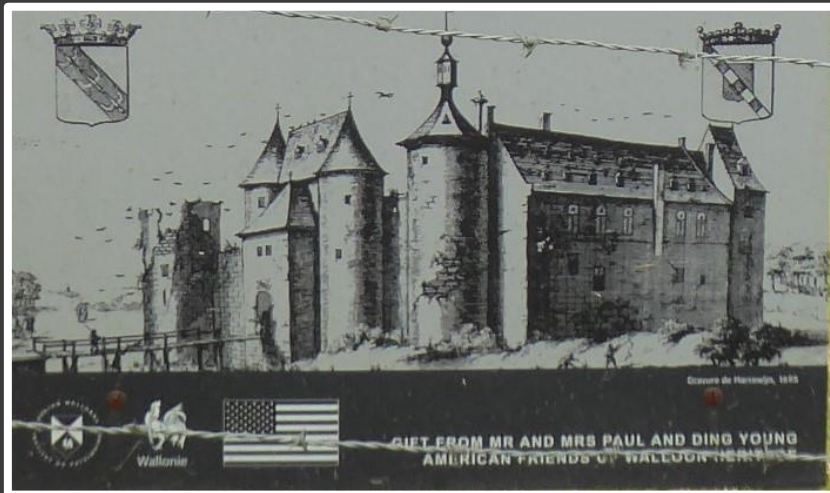


Alexandre Evrard Homestead, Namur

THIRD QUARTER WINNER

Alexandre Evrard immigrated from Tourinnes-la-Grosse, Belgium in 1856 with three children. His wife was deceased. In 1859, he homesteaded 160 acres in Namur. They built a farm and a building that served as a tavern, general store and post office. The family also operated a cheese factory and raised stud horses. The Evrards donated some of their land to build St. Mary of the Snows church, established in 1860. Alexandre's descendants ran the farm and tavern for five generations. Shortly after the church closed in 2001, it was discovered that the deed gifting the land accidentally conveyed the house and tavern to the parish. At the time the land was donated, surveys measured land using chains, so errors were common. The mistake was promptly corrected. The majority of land homesteaded by Alexandre is now in its 6th generation of family ownership.

Submitted by Christine Chaudoir



Chateau De Walhain

Castle of Walhain built in the 12th century; colorized photo from 1899 before destruction by a storm; this is the castle associated with the Belgian Giant, Jacqueline of the Old Castle
Submitted by Willy Monfils



Jadin Granary, Namur

The brick structure was crafted by Belgian immigrant Jean Baptiste Jadin, born in 1858 in the Warisoulx-Meux area of Belgium. He came to America in 1870 with his wife Hortense (Chantinne). The exact year of construction is unknown, but likely after the Great Fire of 1871. The image at right shows pencil notes on the inner walls and beams to record information on the loads of grain put-up there over the years. The granary remained in the Jadin family for several generations, then passed to other Belgian farm families, most recently Bruce and Pam (Renier) Alberts. How many stories could this old granary tell?

Submitted by Kristin Alberts



Oliver & Julia (Janquart) Tureur Home, Gardner

Oliver immigrated from Taviers, Namur Province, Belgium

From left: Julia, Mike, Oliver, Eugene

Submitted by Ella Mae (Sacotte) Tureur



Prosper & Mathilda (Simon) Sacotte Home, Gardner

Adults from left: Zora Barbiaux, Mary Sacotte Maze, Frank, Maze, Mathilda, Prosper, Josephine Sacotte. Children: Joe, Elmer and Herald (sons of Prosper & Mathilda)

Submitted by Ella Mae (Sacotte) Tureur



August & Mary (Bero) Charles Home, Lincoln

August was born in Grand-Leez, Mary Josephe in Sart-lez-Walhain in Belgium

From left: Telesphore, Jule, Freddy (seated), unidentified child, Emma (Charles) Naze with Emerence on lap, unidentified child, Josephine (Charles) Reince, Mary, August

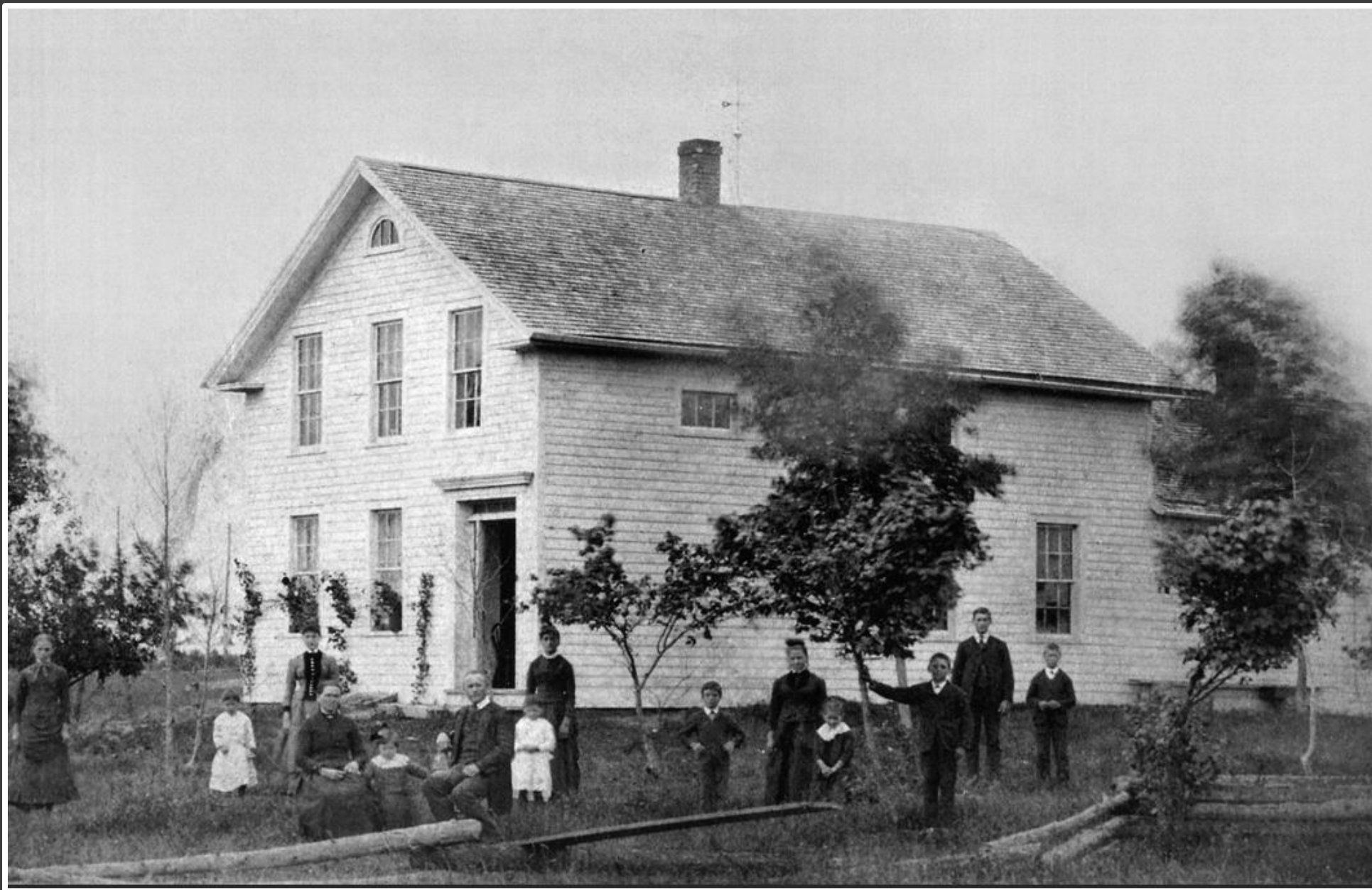
Submitted by Barb (Englebert) Chisholm



Durdonne & Julia (Annoye) Cochart Home, Lincoln
Durdonne was born in Sauveniere, Julia in Ernage, Belgium
Submitted by Monica Thiry



Desire & Emerence (Gaspart) Englebert Home, Misiere
Desire was born in Gembloux, Emerence in Thorembais-Saint-Trond, Belgium
Submitted by Barb (Englebert) Chisholm



Ferdinand & Philomene (Bredael) Haevers Home, Luxemburg
Ferdinand was born in Brussels Belgium, Philomene in Ottenburg in Belgium
Submitted by Phyllis Haevers



Nestor & Jenny (Deschamps) Lampereur Home, Namur

Nestor was born in Thorembais-les-Beguines, Jenny in Thorembais-Saint-Trond, Belgium
Back from left: unidentified male, Edward, Octavia Lampereur Custer/VanRoy, Nestor, Charles,
Jenny. Girls in front Clara Lampereur Balza, Esther Lampereur Maccoux

Submitted by Mike Lampereur



Pierre Homestead, Brussels
From left: Evangeline, Lillian Bill, Art
Submitted by Yvonne Stukenberg



Guillaume & Marie Francois (Dupire) Delwiche Homestead, Namur

Guillaume was born in Saint-Denis, Marie in Lonze in Belgium

Fr. Daems said mass here before St. Mary of the Snow church was built.

Pictured is the family of their son's family, Guillaume & Josephine (Jauquet) Delwiche

Submitted by Christine Chaudoir